

CO To Contact Updater (CO Based) Cloud App Documentation

Table of Contents

- [Purpose](#)
- [Set-up in Eloqua](#)
- [How to use](#)
- [License Information](#)

Purpose

There are situations where you need to move data from a Custom Object (CO) Record to its linked Contact Record. This simple step is not that simple or even possible using Oracle/Eloqua's out-of-the-box features. This is where this cloud action comes into play. With CO to Contact Updater (CO) Cloud Action, you can update Contact Records using linked CO data.

This document will show how this Cloud Action can be used inside Program Canvas (CO).

Set-up in Eloqua

Please follow these instructions to set up this cloud app in your Oracle Eloqua instance.

- Log in to Oracle Eloqua.
- Click on Get App below to install.

[Get app](#)

NOTE: If prompted to log again, please do so.

CO to Contact Updater (CO Based)

Accept and Install



4Thought Marketing Cloud Apps
www.4thoughtmarketing.com

Email support@4ThoughtMarketing.com
Phone 888 356 7824

Description Allows you to update Contact Records using linked CO data.

Services



Action : CO to Contact Updater (CO)

Allows you to update Contact Records using linked CO data.



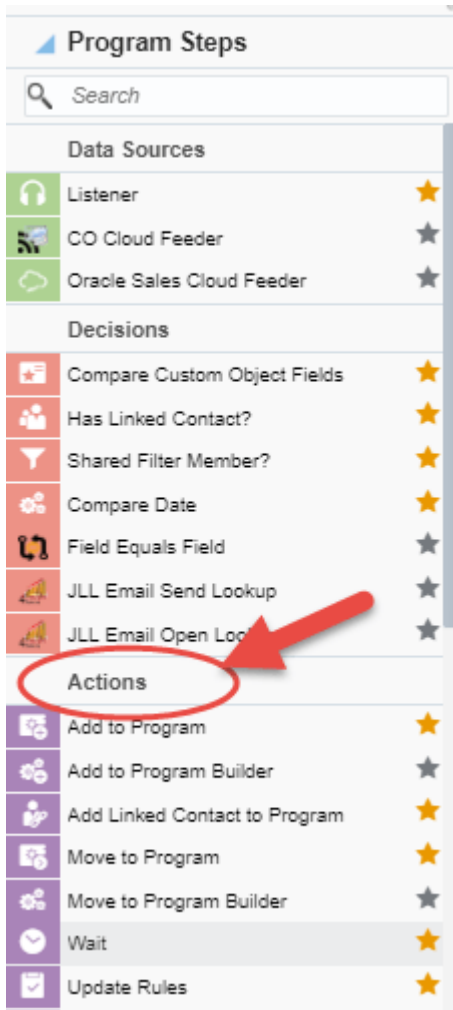
- You're all set. The cloud action is ready to be used.

How to use

The following instructions show a basic/simple usage. You can incorporate this Cloud Action into any existing Program canvas (CO).

- Create/Open a Program canvas (CO)
- Click on "Actions" on the top left side then "Show All Steps" and then locate the "Contact to CO Updater (CO)" Cloud Action under the Actions options (colored in purple).





- Drag and drop the cloud action to the canvas area. Connect the corresponding elements to the dropped cloud action



- Double click the CO to Contact Updater step, you will see some options for this element.
 - Rename the step if needed



- Click the pencil icon to open the settings for this step.

You will need a user ID to log in and configure this Cloud Action. If you don't have one, you can create one. If you do, use your user to Log In in the page shown in the following screenshot:



4Thought Marketing's App Cloud Portal

[Log in](#) [Register](#) [Reset Password](#)

Please enter your user information to log in.

Email address

Password

Remember me?

By checking this box you accept our [Cloud Services Agreement](#)

Log in

[Don't have a Account?](#) [Did you forget your password?](#)

Questions? Comments? Ideas? 888-ELOQUA4 (888 356 7824) | Email us at appCloudPortal@4ThoughtCC.com | Copyright © 2009 - 2016 | All Rights Reserved.

- For this cloud action, you need to indicate the CO and Contact fields which we want to update from CO to Linked Contacts.



- Specify the mapping from CO fields to Contact Fields

Select the CO field and the matching Contact field. Repeat these steps to add all the fields you need

CO to Contact Mapping

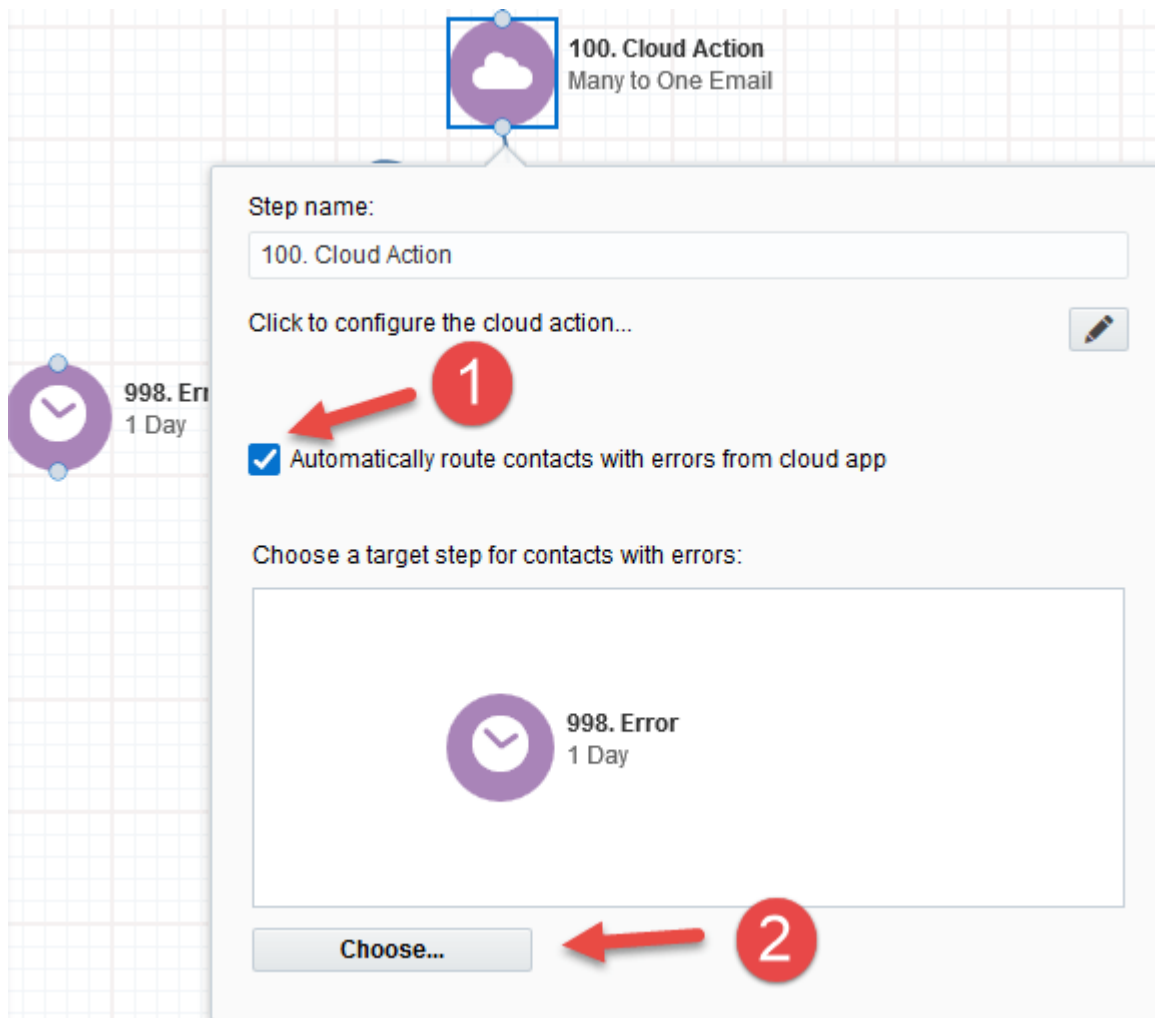
CO Field

Contact Field

Saved Mappings

3	CO Field	<input type="text" value="Company (Text)"/>	
	Contact Field	<input type="text" value="Company (Text)"/>	<input type="button" value="🗑"/>
2	CO Field	<input type="text" value="Last Name (Text)"/>	
	Contact Field	<input type="text" value="Last Name (Text)"/>	<input type="button" value="🗑"/>
1	CO Field	<input type="text" value="First Name (Text)"/>	
	Contact Field	<input type="text" value="First Name (Text)"/>	<input type="button" value="🗑"/>

- a. Then click "Save Settings".
- b. **Recommended:** Create an element in the program in case an error happens, in this example it's a Wait Step. Check the box to "Automatically route records with errors from cloud app", select the step where you want the records to be routed.



- That's all. Activate the campaign, put some contacts in it and see the CO to Contact Updater(CO) Cloud App in Action!

License Information

You need a license to configure and execute this Cloud App. If you don't have a license, an error message will appear on the configuration page.

If you don't see CO Records being processed by the app, it may be because your license is missing or expired. To obtain a license, contact your account manager or [contact us](#).

- Each Eloqua instance requires a separate cloud app license.
- Each cloud app license includes a reasonable usage limitation of 250k records processed

daily and up to 5 app instantiations per Eloqua instance. Higher usage tiers are available at extra cost.

- For additional license details, please review the [Cloud Services User License Agreement](#).